

# The Stripes Are Stars Forever



**Jodi McLean looks at a show house sure to be a star.**  
*Some things are quite simply always in fashion.  
Whether they be slim or broad, regimented or variegated, vertical or horizontal,  
the stripe has always held its own throughout fashion's history.  
Stripes are superstars in the interior firmament and are here to stay.*

The master suite boasts a cut velvet vanilla and latte horizontal stripe pelmet which crowns a three tone mocha, cream and latte vertical stripe silk curtain. Mini vanilla velvet pin stripe bolsters and curtain - match cushions grace the bed, while a luxury bespoke pin stripe throw is edged in fine chocolate suede to match the suede boudoir chair, giving extra depth to the room set. The bespoke wall board was made in the same fabric as the pelmet to add to the boutique hotel vibe.

## Classic And Timeless

In this beautiful recently completed development of luxury apartments in East Kilbride's village a variety of interesting striped fabrics were cleverly used in the show house.

When director of Abbey Construction - Allison McCole, and XS Interiors designer - Loraine Chassels got together both felt that the 'The Manse' lent itself to an interior that had a more relaxed and classic appeal rather than anything too overpowering.

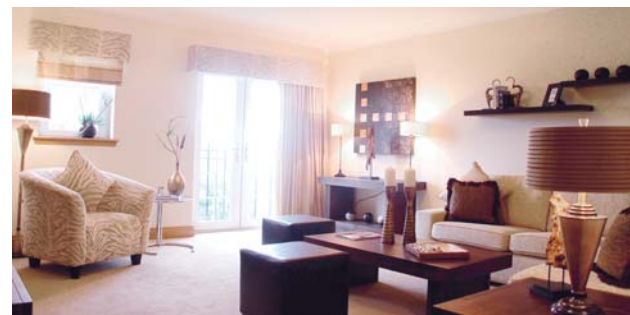
"I liked the way Loraine used stripes so creatively in the soft furnishings", commented Allison. "The different textures of fabrics and kinds of stripes really worked well together and created a coherent flow throughout the property", she added. "There is also a softness to the colour way used that makes the apartment very relaxing".

## Texture And Tone

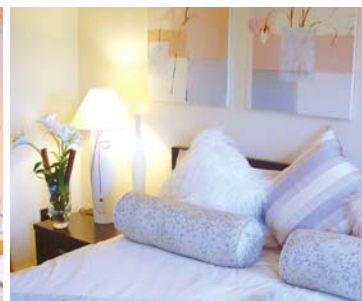
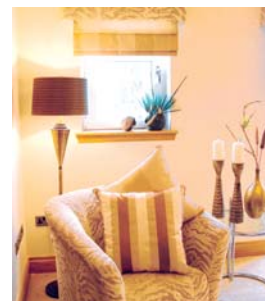
"The majority of the striped fabrics I used were all quite subtle", said Loraine. "The idea was to restrict the palette of colours to create a warm neutrality but to be adventurous with the mix of stripes and textures. In the drapes, blinds, and feature cushions, I worked mostly with soft vanillas, mochas and golds. I introduced the strength and richness of the interior by adding American dark walnut furniture to give the added depth", she explained.

Most people agree that a soft calm colour palette is very enjoyable to live with, and easy on the eye. It has a timeless appeal, and is not easy to tire of. Not everyone can relate to strong colour ways and lively patterns. As fun and expressive as they are initially, they can eventually prove tiresome. Using richer toned furnishings and fabulous dress items can spice up the relaxed neutrality of an interior, as seen here, as can textures and pattern.

The lure of the original village in East Kilbride and The Manse's prime location is sure to appeal to the most discerning of buyers. "I have a feeling", said Allison of Abbey, "that whoever buys the show house at The Manse, may well want to move in to it with everything just the way it is. Every room just seems to beckon you to stay. But then isn't that what 'home' is all about?".



In the lounge cut velvet cream and gold Zebrano variegated stripe pelmets sit along side vertical striped two textured curtains and blinds in slub ruched silk. A Gleneagles tub chair is covered in the same fabric as the pelmet and throw cushions made in the same fabric as the curtains are laid on the L shaped sofa to add to the fusion.



The Stripes are Stars - with a striped silk cushion, vanilla zebra striped pelmet and chair and striped accent items including carved, gilded wood candlesticks and striped silk lampshade, the co-ordinated use of stripes complete the perfect picture. Misty toned striped pelmets feature here in the Guest Bedroom while Roman blinds in the same colour ways were made using a geometric coordinate mosaic patterned fabric.

## Contacts...

Loraine at XS Interiors and EX Showhouse Furniture **0141 942 0519**  
**www.xsinteriors.com**  
The Manse East Kilbride **01355 263717**

